



Waldorf  
INSTITUTE *of*  
SOUTHEASTERN  
MICHIGAN

A developing institute of the  
Association of Waldorf Schools of  
North America

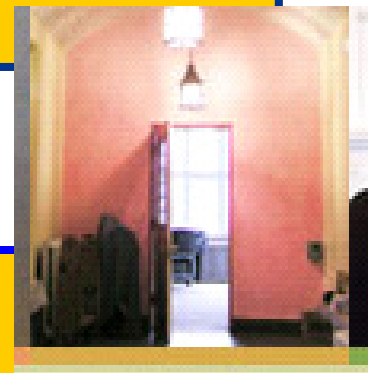
**Offering**  
**Foundation Studies**  
**Waldorf Elementary**  
**Teacher Preparation**  
**and**  
**Waldorf**  
**Early Childhood**  
**Teacher Preparation**

1923 Geddes  
Ann Arbor, MI 48104  
Tel: 734 635-4143  
WISM.org

Current as of September 2011

## Why Waldorf Teaching?

- Enjoy independence and freedom in shaping your classroom activities and curriculum to meet your students.
- Participate in an interconnected and active community of teachers, parents and children.
- Challenge the limits of your own educational growth every day as you journey with your class through the years and grades.
- Work with dedicated, experienced and motivated colleagues.
- Participate in national conferences, continued education and learning opportunities.
- Enjoy helping children reach out and grow through the arts, music, handwork, gardening and movement activities.
- Participate as an active member of a self-administered school—one in which you can be part of decision making about the direction of the school.



## What do we offer?

- Weekend program of 27 weeks per year—allowing you to work full-time, live in your local community and complete training.
- Two year completion plan—enabling you to complete your foundation studies preparation, teacher preparation courses, and practicum within two calendar years. The flexibility to extend it over a longer period.
- Master teachers drawn from around the region, with a dedication to adult education and a desire to support students on their journey into the classroom.
- Affordable program in Southeastern Michigan; courses cost \$225 or \$425 depending on hours, and the full year cost is approximately \$7,400 - full details on tuition and fees on pages 4, 5 and 6 of this catalog.
- Mentoring, student advising and one-on-one support and assistance in our limited enrollment program.
- Opportunities to observe, volunteer in, and then complete teaching practicum in local Michigan Waldorf Schools.

## **Program Overview**

The Waldorf Institute of Southeastern Michigan, formerly the Waldorf Institute of the Great Lakes (WTDA), founded in 1991, offers courses in Anthroposophical studies, child development, Waldorf methods, and the arts for prospective early childhood and elementary teachers.

Waldorf Education offers holistic education for the developing child - head, hands, and heart. Its innovative curriculum integrates the arts, practical work, and academics. It is uniquely developmentally-oriented, addressing the child's changing consciousness as it unfolds, stage by stage, from preschool through twelfth grade. Waldorf students develop a deep love for life and learning, as well as the confidence, innovation and strength to be of service to the world.

Waldorf is among the fastest growing educational movements in the world. In North America alone there are more than 250 Waldorf schools in some level of development, and numbers worldwide have doubled in the last decade to more than 900 schools. Along with this type of growth is a constant demand for new teachers. However, there is a shortage of trained and qualified Waldorf teachers worldwide. Three hundred to four hundred new teachers are needed each year in North America, yet all the Waldorf teacher education programs combined only train about half that number.

The Waldorf Institute of Southeastern Michigan has “developing institute” status as part of the Association of Waldorf Schools of North America (AWSNA). The programs offered that lead to the Waldorf Education Certificate in are recognized by Waldorf schools all over the world. Please see the brief descriptions of programs in this booklet and also contact our office for further information.

## **Year Round Program**

We offer a year round format of courses on the weekend (Friday evening and Saturday). Courses are offered in Ann Arbor, Detroit and Rochester Hills, Michigan. The term schedule for the year round program includes two 11 week terms in the Fall and the Winter. A short, 3-weekend Spring term completes the year. Some independent summer work is required of students seeking certification.

## **Foundation Studies**

The Foundation Studies courses give an introduction to the ideas and initiatives of Rudolf Steiner. Conceptual and artistic studies provide the basis for the Waldorf School curriculum and for a personal path of development.

## **Waldorf Teacher Early Childhood and Elementary Education**

The Early Childhood and Elementary Education Programs are designed to develop pedagogical and artistic capacities within the prospective Waldorf Class Teacher. Some courses are also appropriate for teachers seeking personal renewal and parents interested in Waldorf methodology. Candidates for Waldorf Teacher Early Childhood or Waldorf Teacher Elementary Education Certificate should submit an application, complete with transcripts, references and the \$50 application fee to the Institute. An interview will be required.

## Foundation Studies

The *Foundation Studies Program* includes intensive work in the visual, speech, vocal, sculptural and social arts, as well as a thorough introduction to Anthroposophy and Rudolf Steiner. The nature of the human being is studied through courses in child and adult development as well as cultural history. Concurrent completion of all Foundation Studies classes is a requirement of the Waldorf Teacher Early Childhood and Elementary Education programs.

Course descriptions can be found under Program Offerings.

### Class Requirements and Costs Foundation Studies Program

Course No.	Course Title	Clock Hours	Cost
WISM 102	Human Development: The Individual Path	15	425
WISM 103	Cultural History	15	425
WISM 117	Chorus	10	225
WISM 118	Clay Modeling	15	425
WISM 119	Painting	15	425
WISM 120	Work, Life, Times of Rudolf Steiner	15	425
WISM 121	Basic Books of Rudolf Steiner	15	425
WISM 122	Foundations of Anthroposophy	15	425
WISM 124	Festivals	15	425
WISM 130	Eurythmy	10	225
WISM 131	Spacial Dynamics	10	225
WISM 135	Child Development: Birth to Seven	20	425
WISM 136	Child Development: Seven to Eighteen	20	425
WISM 137	Creative Speech	10	225
WISM 140	Images in History	20	425
<b>TOTAL Foundation Studies Classes</b>		<b>220</b>	<b>\$5575</b>

## Waldorf Teacher Elementary Education Program

The *Elementary Education Program* is designed to prepare institute students to become Waldorf “class teachers”. Because Waldorf class teachers remain with their cohort of children from 1st through 8th grade, the Elementary Education Program prepares prospective class teachers to teach all academic subjects. Courses in Anthroposophy, Child Development, Waldorf methods and the arts are required. Concurrent completion of Foundation Studies and a successful practicum, are required before graduation from the Waldorf Teacher Elementary Education program.

### Class Requirements and Costs for the Elementary Education Program

Course No.	Course Title	Clock Hours	Cost
WISM 225	Administration in Waldorf Schools	20	425
WISM 226	The Inner Life of the Teacher (Indep Study)	15	425
WISM 227	Exceptional Child	20	425
WISM 235	Music for Teachers	15	425
WISM 236	Movement for Teachers	15	425
WISM 237	Speech and Drama in the Classroom	15	425
WISM 238	Handwork	15	425
WISM 242	Drawing and Modeling	15	425
WISM 245	Storytelling	15	425
WISM 301	Humanity and Nature (Study of Man)	15	425
WISM 320	Curriculum Development	20	425
WISM 322	Waldorf Methods for Teaching Math	20	415
WISM 325	Waldorf Methods for Teaching Science	20	425
WISM 326	Waldorf Methods for Teaching Social Studies	20	425
WISM 329	Waldorf Methods for Teaching Language Arts Grades 1-4	20	425
WISM 330	Waldorf Methods for Teaching Language Arts Grades 5-8	20	425
WISM 401	Intuitive Thinking	20	425
WISM 450	Individual Project	40	825
WISM 455	Student Teaching Seminar	20	425
WISM 458	Student Teaching In a Waldorf School	200	825
<b>TOTAL Waldorf Teacher Elementary Education Classes</b>		<b>560</b>	<b>\$9280</b>
<b>TOTAL with Foundation Studies Classes for Waldorf Teacher Elementary Education Certificate</b>		<b>780</b>	<b>\$14,865</b>

## Waldorf Teacher Early Childhood Education Program

The *Early Childhood Education Program* is designed to develop the pedagogical and artistic skills necessary to become a Waldorf Kindergarten, Pre-Kindergarten, or home daycare teacher. Courses in Anthroposophy, Child Development, Waldorf methods, and the arts are required. Concurrent completion of Foundation Studies program and a successful practicum are required before graduation from the Waldorf teacher Early Childhood Education program.

### Class Requirements and Costs for the Early Childhood Education Program

Course No.	Course Title	Clock Hours	Cost
WISM 225	Administration in Waldorf Schools	20	425
WISM 226	The Inner Life of the Teacher (Indep Study)	15	425
WISM 227	Exceptional Child	20	425
WISM 235	Music for Teachers	15	425
WISM 238	Handwork for Teachers	15	425
WISM 301	Humanity and Nature (Study of Man)	15	425
WISM 305	Young Child and Society - Early Childhood	20	425
WISM 352	Beautiful Basics - Early Childhood	20	425
WISM 355	The Seasons - Early Childhood	20	425
WISM 370	Storytelling - Early Childhood	15	425
WISM 373	Puppetry - Early Childhood	20	425
WISM 375	Painting & Coloring - Early Childhood	15	425
WISM 377	Circle Games and Singing - Early Childhood	20	425
WISM 380	Doll Making - Early Childhood	15	425
WISM 401	Intuitive Thinking	20	425
WISM 450	Individual Project	40	825
WISM 455	Student Teaching Seminar	20	425
WISM 458	Student Teaching In a Waldorf Setting	200	825
<b>TOTAL Waldorf Teacher Early Childhood Education Classes</b>		<b>525</b>	<b>\$8450</b>
<b>TOTAL with Foundation Studies Classes for Waldorf Teacher Early Childhood Education Certificate</b>		<b>745</b>	<b>\$14,025</b>

## Program Costs and Policies

### Enrollment:

Students should apply for admission to the program at least fourteen days before the beginning of the term. Students are encouraged to start with the fall term but applications are considered for each term in the year. Application deadlines are:

For fall term 2011—August 22nd

For winter term 2012—December 22nd

For spring term 2012—April 20th

Students must complete the application and submit their college transcripts. An admissions interview with the director is required. All applicants must have graduated from high school. All admissions are made at the discretion of the Director.

Be advised, that a Bachelors Degree or a plan of work toward a BA will be required to be hired by any of the three Southeastern Michigan Waldorf Schools; The Rudolf Steiner School of Ann Arbor – [www.steinerschool.org](http://www.steinerschool.org), the Oakland Steiner School – [www.oaklandsteiner.org](http://www.oaklandsteiner.org) and the Detroit Waldorf School – [www.detroitwaldorf.com](http://www.detroitwaldorf.com)

### Tuition and Fees:

The application fee is \$50. The tuition rate is \$225, \$425 or \$825 per class, depending on hours. Payment in full at the time of registration is strongly preferred; however, a deferred payment plan is available to all students. Under this plan, 25% of tuition is due and payable prior to the first day of class. Subsequent payments of 25% of tuition plus a \$10 payment plan fee are due and payable on the last day of September, October and November (for the Fall term), or January, February and March (for the Winter term). Spring term tuition and fees must be paid in full prior to the second week of classes. Outstanding balances can be paid in full at any time, thereby avoiding subsequent payment plan fees. Any outstanding balance from previous terms must be paid in full prior to registration.

Tuition and fees can be paid by cash or check. Returned checks will be subject to a \$25 fee. We are not able to accept credit card payments.

### Student conduct expectations:

The Waldorf Institute of Southeastern Michigan expects that all students are actively engaged in making the most of their experience in the program. Students are expected to participate fully, complete assigned homework, attend classes within the guidelines of the attendance policy and act as responsible adults in their relationship with the institute. The following behavior will not be tolerated:

- Sexual harassment of any type—including verbal harassment and teasing.
- Violent threats or behavior to other students, faculty or administration.
- Academic dishonesty—including plagiarism, cheating on tests, and actively seeking to interfere with another's academic work.

If a student engages in any of the behavior listed above a review of the behavior will take place and the Director of Teacher Training and the Chair of the Board will make a decision about whether the student is able to continue in the program or not. If a student is dismissed for conduct he/she will not be able to apply for re-admission.

**Conditions of probation and dismissal from the program:**

It is essential that students maintain adequate progress towards the completion of their certificate. The following policies are in place to ensure that students are making adequate progress each term.

1. If a student fails any class they must attend a mandatory meeting with the program director to discuss how to avoid repeating the situation.
2. Any student who does not pass 75% of their classes for a term will be placed on academic probation. Students on academic probation are required to meet with the program director prior to enrollment in the next term and monthly over the next term to discuss academic progress and receive support and tutoring if appropriate.
3. Any student who while on academic probation does not pass 75% of their classes for a term will be dismissed from the institute.
4. Students who have been dismissed from the program may apply for re-entry in the following fall term. Requests for entry will be considered by the program director and only approved at his or her discretion. Students who have been dismissed from the program will only be allowed to attend classes at a half time level for the first term (a total of 3 classes maximum) and must pass all classes or be dismissed permanently. A student who returns from dismissal and fails to pass at least 80% of the classes attempted in a later term (beyond the first one back) will be permanently dismissed from the institute.

**Cancellation and Refund Policies:**

All tuition and fees paid by the applicant shall be refunded if the applicant is rejected by the school before enrollment. An applicant fee of not more than \$25.00 may be retained by the school if the applicant is denied. All tuition and fees paid by the applicant shall be refunded if requested within three business days after signing a contract with the school. All refunds shall be returned within 30 days. Once the three business days have elapsed the following policies will apply.

**Attendance Policy:**

Students are expected to attend all classes, and complete all assigned work. Students who miss more than two classes in a term may fail the course. Each tardy will count as 1/3 of an absence—and consistent tardiness, over seven in a term, may result in failing the class.

**Grading:**

All courses are graded pass/fail.

**Leaves:**

Students may temporarily leave the program, and reenter at a time of their choice. However, to receive their certificate they must complete all requirements in place at the time of their graduation. Students who leave by their own choice may apply for re-entry at will.

**Withdrawal:**

In fall or winter, students who withdraw from a course prior to the second session are eligible for a 100% refund of the tuition for that course, and those who withdraw prior to the third session are eligible for a 30% refund. After the third session of the term, no refunds will be granted.

Application and registration fees are non-refundable.

**Auditing Tuition Rate:**

Students who would like to audit a course which they previously took for credit may do so at no-charge at the discretion of the director. Students not seeking credit towards a Waldorf Certificate may take classes for less than the regular tuition rate. \$135 audit rate for a \$225 regular tuition level class and \$250 audit rate for a \$425 regular tuition level class.

**Non-Tuition Costs**

Students should also budget for books, musical instruments, and supplies. Tuition fees cover most course handouts.

Fall Term: \$100—\$150

Winter Term: \$100—\$150

Spring Term: \$40—\$60

A limited amount of financial aid from private sources is available for Early Childhood and Elementary Education year-round students in their second or third year. If you would like to be considered for financial aid, speak to the business manager.

**Grievance Policy:**

A grievance must be submitted in writing. The grievance shall outline the problem, date of occurrence, any person(s) involved, and be dated and signed by the student. The letter should be hand-delivered to the director, if possible, for the quickest resolution. The director will review the grievance letter and clarify any missing or ambiguous issues with the student. Within 72 hours, the director will investigate the complaint to determine the factual elements of the grievance and make a determination of the best approach to deal with the grievance. The student filing the grievance may be called upon to attend a conciliation meeting with the director and the other person(s) outlined in the grievance letter. The outcome of the grievance will be documented by the director and maintained as a part of the office records. Dissatisfaction with the director's handling of a grievance should be voiced to the board of trustees and the student should request a meeting with the board.

Students may also file a complaint with the State of Michigan at [www.michiganps.net](http://www.michiganps.net).

## Program Offerings: Foundation Studies

Foundation Studies is an intensive program that introduces students to the basic ideas of Anthroposophy, the philosophy of Rudolf Steiner, while giving them a deep immersion in a variety of conceptual and artistic disciplines.

Completion of the Foundation Studies classes is a requirement of the Waldorf Teacher Elementary Education and Early Childhood Education Certificate Programs. Courses may also be taken independently as a series of self-enrichment classes.

Course Number	Course Name	Hours/ Cost	Description
WISM 102	Human Development: The Individual Path	15 \$425	Phases of child and adult development from birth to death. <i>Lecture/discussion</i>
WISM 103	Cultural History	15 \$425	The Evolutionary nature of unfolding human consciousness. Writings of Owen Barfield and Rudolf Steiner as related to the child's changing consciousness. <i>Lecture/discussion</i>
WISM 117	Chorus	10 \$225	An introduction to choral singing: pitch matching, vocal range, rhythm. <i>Studio</i>
WISM 118	Clay Modeling	15 \$425	The art of clay modeling as practiced by Waldorf teachers. <i>Studio</i>
WISM 119	Painting	15 \$425	The art of watercolor painting as practiced by Waldorf teachers. <i>Studio</i>
WISM 120	Work, Life, and Times of Rudolf Steiner	15 \$425	Major themes in Rudolf Steiner's work, anthroposophy in the context of intellectual history, the 'daughter movements' in agriculture, medicine, etc. <i>Lecture</i>
WISM 121	Basic Books of Rudolf Steiner	15 \$425	An introduction to four central texts. In-depth study of one text. <i>Discussion</i>
WISM 122	Foundations of Anthroposophy	15 \$425	Fundamental topics including the threefold human being, twelve senses, temperaments, meditations, etc. <i>Discussion</i>
WISM 124	Festivals	15 \$425	Cycles of the year, festivals in history, traditional Waldorf festivals, creating new celebrations, multi-culturalism. <i>Lecture/Discussion</i>
WISM 130	Eurythmy	10 \$225	The art of eurythmy: visible speech and visible music. <i>Studio</i>
WISM 131	Spacial Dynamics	10 \$225	Harmonious physical movement, balance, posture, gesture. <i>Studio</i>
WISM 135	Child Development Birth to Seven	20 \$425	Principles of Waldorf education related to developmental stages. <i>Lecture/Discussion</i>
WISM 136	Child Development Seven to Eighteen	20 \$425	Principles of Waldorf education related to developmental stages. <i>Lecture/Discussion</i>
WISM 137	Creative Speech	10 / \$225	The art of speaking clearly and artistically. <i>Studio</i>
WISM 140	Images in History	20 \$425	The uses of images in history: the nature of images in Waldorf Education. <i>Lecture / Discussion / Fieldwork</i>

## Program Offerings:Waldorf Teacher Education Elementary Education Program and Early Childhood Education Program

Coursework for the *Waldorf Teacher Elementary Education Program* is designed for those wishing to become Waldorf class teachers or as enrichment of those already in the classroom.

The *Waldorf Teacher Early Childhood Education Program* is designed to develop the pedagogical and artistic skills necessary to become a Waldorf Kindergarten, Pre-Kindergarten, or home daycare teacher.

Completion of the *Foundation Studies Program* is a co requisite for the Waldorf Teacher Education certifications.

Be advised, that a Bachelors Degree or a plan of work toward a BA will be required to be hired by any of the three Southeastern Michigan Waldorf Schools; The Rudolf Steiner School of Ann Arbor – [www.rssaa.org](http://www.rssaa.org) , the Oakland Steiner School – [www.oaklandsteiner.org](http://www.oaklandsteiner.org) and the Detroit Waldorf School – [www.detroitwaldorf.com](http://www.detroitwaldorf.com) .

Course Number	Course Name	Hours/ Cost	Description
WISM 225	Administration In Waldorf Schools	20 \$425	Waldorf School administration and organizational structure; group work as preparation for consensus-based decision making as practiced in Waldorf Schools. <i>Lecture / Discussion</i>
WISM 226	The Inner Life of the Teacher	15 \$425	Guided independent study. The art of nurturing one's strengths and identifying one's weaknesses. Completion of prescribed work in speech, eurythmy, the visual arts, music, and philosophy. <i>Tutorial / Discussion</i>
WISM 227	The Exceptional Child	20 \$425	Waldorf methods of observation and evaluation for children with special needs or those making transitions. <i>Lecture / Discussion</i>
WISM 235	Music for Teachers	15 \$425	Basic proficiency in singing and recorder skills. <i>Studio</i>
WISM 236	Movement for Teachers	15 \$425	The role of movement and games in the classroom from grades one through eight. <i>Studio</i>
WISM 237	Speech and Drama in the Classroom	15 \$425	The role of speech and drama in the curriculum from first through eighth grade. <i>Lectures &amp; Discussion/ Studio</i>
WISM 238	Handwork for Teachers	15 \$425	Knitting, crocheting, and cross-stitch. <i>Studio</i>
WISM 242	Drawing and Modeling	15 \$425	Chalkboard drawing, form drawing, modeling. <i>Studio</i>
WISM 245	Storytelling Elementary Education	15 \$425	Techniques of storytelling for children. Resource development and practice. <i>Lecture / Discussion / Studio</i>

**Program Offerings:Waldorf Teacher Education *Continued***  
**Elementary Education Program and Early Childhood Education Program**  
**Course offerings**

<b>Course Number</b>	<b>Course Name</b>	<b>Hours/ Cost</b>	<b>Description</b>
WISM 301	Humanity and Nature (Study of Man)	15 \$425	The relationship between humanity and nature; focused discussions on Steiner's central text "The Foundations of Human Experience," also known as "The Study of Man". <i>Discussion</i>
WISM 305	Young Child and Society (Early Childhood)	20 \$425	Cultivation joy and wonder in young children; inside and outdoor play; developmental delays; working with parents. <i>Discussion</i>
WISM 320	Curriculum Development (Elementary Education)	20 \$425	An outline of the Waldorf curriculum from early childhood through high school, with primary emphasis on elementary and middle school years. <i>Lecture / Discussion</i>
WISM 322	Waldorf Methods for Teaching Math	20 \$425	Methodology and content of the Waldorf mathematics curriculum. <i>Lecture</i>
WISM 325	Waldorf Methods for Teaching Science	20 \$425	Waldorf methods for teaching the sciences: zoology, botany and physiology, geology, meteorology, chemistry and physics. <i>Lecture / Discussion / Studio</i>
WISM 326	Waldorf Methods for Teaching Social Sciences	20 \$425	Key components of the Waldorf curriculum for teaching history and geography. <i>Lecture / Discussion</i>
WISM 329	Waldorf Methods for Teaching Language Arts Grades 1-4	20 \$425	Key components of the Waldorf developmental approach to reading and writing: introduction of letters through story, image and verse; the developments of writing through movement and drawing (form design); the art of story telling; spelling, grammar and phonics. <i>Lecture / Discussion</i>
WISM 330	Waldorf Methods for Teaching Language Arts Grades 5-8	20 \$425	Continued development of reading writing and speaking skills. Children's literature, nonfiction sources, historic speeches. Poetry, drama, creative writing, calligraphy. <i>Lecture / Discussion</i>

**Program Offerings:Waldorf Teacher Education Continued**  
**Elementary Education Program and Early Childhood Education Program**  
**Course Offerings**

<b>Course Number</b>	<b>Course Name</b>	<b>Hours/ Cost</b>	<b>Description</b>
WISM 352	Beautiful Basics Early Childhood	20 \$425	Essentials of the Waldorf Early Childhood Classroom: play, aesthetics, rituals, practical life, work with parents. <i>Lecture / Discussion</i>
WISM 355	The Seasons Early Childhood	20 \$425	Cycles of the year, farming, the nature table, seasonal crafts and domestic arts. <i>Lecture / Discussion / Fieldwork</i>
WISM 370	Storytelling Early Childhood	20 \$425	Birthday, folk, nature stories; fairy tales. <i>Lecture / Discussion</i>
WISM 373	Puppetry Early Childhood	20 \$425	Sewing puppets and performing puppet plays. <i>Studio</i>
WISM 375	Painting & Coloring Early Childhood	15 \$425	Color exploration: watercolor painting, coloring, dyeing. <i>Studio</i>
WISM 377	Circle Games and Singing Early Childhood	20 \$425	Circle time, singing games, movement, finger games, verses, and songs for the Early Childhood classroom. <i>Lecture / Discussion</i>
WISM 380	Doll Making Early Childhood	15 \$425	Construction of a traditional Waldorf doll. <i>Studio</i>
WISM 401	Intuitive Thinking	20 \$425	Contemplative practice for teachers, writing children's reports and verses, exercises for developing creativity and flexibility in the classroom. <i>Lecture / Discussion</i>
WISM 450	Individual Project	30 \$825	An opportunity to deepen skills to remediate weaknesses. <i>Studio</i>
WISM 455	Student Teaching Seminar Elementary Education	20 \$425	Taken in conjunction with Student Teaching, an opportunity to discuss classroom and community events and activities.
WISM 455	Student Teaching Seminar Early Childhood	20 \$425	Taken in conjunction with Student Teaching. Discussions on classroom practice, community activities, state legal and licensing requirements. <i>Seminar</i>
WISM 458	Student Teaching in a Waldorf School Elementary Education	200 \$825	Student teaching and related activities five days per week in a Waldorf school under the supervision of the College of Education and faculty of the Waldorf school. Conferences will be scheduled throughout the term. (Note: This is a half semester course of seven weeks.)
WISM 459	Student Teaching in a Waldorf Setting Early Childhood	200 \$825	Student teaching in a Waldorf Kindergarten, pre-school or home daycare. Five days per week for seven weeks.

## Requirements for Certificate in Foundation Studies

### Course No. Course Title

WISM 102	Human Development: The Individual Path
WISM 103	Cultural History
WISM 117	Chorus
WISM 118	Clay Modeling
WISM 119	Painting
WISM 120	Work, Life and Times of Rudolf Steiner <i>(Name change only from Anthroposophical Studies I)</i>
WISM 121	Basic Books of Rudolf Steiner <i>(Name change only from Anthroposophical Studies II)</i>
WISM 122	Foundations in Anthroposophy <i>(Name change only from Explorations in Inner Development)</i>
WISM 124	Festivals
WISM 130	Eurythmy
WISM 131	Spacial Dynamics
WISM 135	Child Development—Birth to Seven
WISM 136	Child Development—Seven to Eighteen
WISM 137	Creative Speech
WISM 140	Images in History

20 hours of service and experiential learning

### Notes on Certificate in Foundation Studies

Students who take their Foundation Studies courses part-time over a number of years will find that courses occasionally change as faculty with particular expertise become available.

Students who transfer in to the program, either during Foundation Studies, or as an Elementary or Early Childhood Education student, will need to provide documentation of courses and activities that are equivalent in order to receive recognition for them from the Waldorf Institute of Southeastern Michigan.

## **Requirements for Waldorf Teacher Elementary Education Certificate**

### **Course No. Course Title**

WISM 225	Administration in Waldorf Schools
WISM 226	The Inner Life of the Teacher (Independent Study)
WISM 227	Exceptional Child
WISM 235	Music for Teachers
WISM 236	Movement for Teachers
WISM 237	Speech and Drama in the Classroom
WISM 238	Handwork for Teachers
WISM 242	Drawing and Modeling
WISM 245	Storytelling
WISM 301	Humanity and Nature (Study of Man)
WISM 320	Curriculum Development
WISM 322	Waldorf Methods for Teaching Math
WISM 325	Waldorf Methods for Teaching Science
WISM 326	Waldorf Methods for Teaching Social Studies
WISM 329	Waldorf Methods for Teaching Language Arts Grades 1-4
WISM 330	Waldorf Methods for Teaching Language Arts Grades 5-8
WISM 401	Intuitive Thinking
WISM 450	Individual Project
WISM 455	Student Teaching Seminar
WISM 458	Student Teaching In a Waldorf School

20 hours of service and experiential learning

5 days of classroom observation in the first year of teacher education

Completion of Foundation Studies Program

### **Notes on Waldorf Teacher Elementary Education Certificate**

Students who take their courses part-time need to fulfill the requirements that are in place at the time of their graduation.

Students who wish to transfer classes in from another program must meet with the Director and have an individual evaluation of the content of classes taken elsewhere. Appropriate classes will then be recognized as equivalent to those of WISM and the student will not be required to complete them with WISM as well.

## **Requirements for Waldorf Teacher Early Childhood Education Certificate**

### **Course No. Course Title**

WISM 225	Administration in Waldorf Schools
WISM 226	Inner Life of the Teacher (Independent Study)
WISM 227	Exceptional Child
WISM 235	Music for Teachers
WISM 238	Handwork for Teachers
WISM 301	Humanity and Nature (Study of Man)
WISM 305	Young Child and Society
WISM 352	Beautiful Basics: Essentials of the Waldorf Early Childhood Classroom
WISM 355	The Seasons
WISM 370	Storytelling
WISM 373	Puppetry
WISM 375	Painting & Coloring
WISM 377	Circle Games and Singing
WISM 380	Doll Making
WISM 401	Intuitive Thinking
WISM 450	Individual Project
WISM 456	Student Teaching Seminar
WISM 459	Student Teaching In a Waldorf Setting

20 hours of service and experiential learning

5 days of classroom observation in the first year of teacher education

Completion of Foundation Studies Program

### **Notes on Waldorf Teacher Early Childhood Education Certificate**

Students who take their courses part-time need to fulfill the requirements that are in place at the time of their graduation.

Students who wish to transfer classes in from another program must meet with the Director and have an individual evaluation of the content of classes taken elsewhere. Appropriate classes will then be recognized as equivalent to those of WISM and the student will not be required to complete them with WISM as well.

# Details about the Waldorf Institute of Southeastern Michigan

## **Names of Governing Body:**

Our Board Of Trustees:

Ken Mogill, President  
Denise McCauley  
Melanie Reiser  
Jim Belanger  
Frederick Amrine  
Linda Williams  
Kim Gredanius  
Margot Amrine, Staff

## **Names of Administrative Staff:**

Margot Amrine, Director  
Lisa Peyser, Business Manager

## **Instructors and Subject Areas:**

Frederick Amrine Philosophy  
Margot Amrine Curriculum, Human Development, Philosophy, Arts  
Claudia Browne Human Development, Curriculum and Philosophy  
Susann Eddy Arts  
Elena Efimova Arts  
Mary Emery Curriculum and Philosophy  
Cynthia Harrington Handwork  
Damen Karoly Early Childhood Arts and Curriculum  
Lawrence Mathews Curriculum and Philosophy  
Denise McCauley Spacial Dynamics  
Mary Jo Oresti Remedial Instruction  
Sian Owen-Cruise Curriculum and Philosophy  
Barbara Patterson Child Development  
Anna Rainville Early Childhood Curriculum  
Sudee Taormina Arts  
Katherine Thivierge Creative Speech  
Sarah VanderMuelen Early Childhood Arts and Curriculum  
Cheryl Van Duzen Music  
Linda Williams Curriculum

## **Placement and Job Support:**

There is a high demand for Waldorf teachers in the United States, and in Southeastern Michigan. The Waldorf Institute of Southeastern Michigan will provide the following placement assistance:

Maintenance of an up to date job resource book that is open to all students.

Posting and distribution to students of local job opportunities.

Advising regarding job seeking and interviewing.

Supervising of teaching practicum in last stages of teacher education.



Waldorf  
INSTITUTE of  
SOUTHEASTERN  
MICHIGAN



Administrative Location

1923 Geddes Ave  
Ann Arbor, MI 48104

Instructional Locations

Oakland Steiner School 3976 Livernois Rd Rochester Hills, MI 48307	Rudolf Steiner HS 2230 Pontiac Trail Ann Arbor, MI 48105
--	--

Detroit Waldorf School 2555 Burns Detroit, MI 48214	Rudolf Steiner LS 2775 Newport Rd Ann Arbor, MI 48103
---	---

**Phone: 734 635- 4143**  
**web: [WISM.org](http://WISM.org)**